



FOUND LOOSE GREASE DOOR WAS NOT FIXED
NTAB corrected this



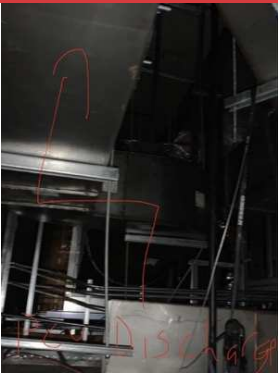
FAN BELT HAS COME OFF



DIFFUSER FLEX STILL CRUSHED UNDER THE PCU



ADDED TURNS TO THE GREASE DUCT



GREASE DUCT WAS DESIGNED TO HAVE 2 45 DEGREE ELBOWS



PCU- INNER FAN SHEAVE HAS COME LOOSE

NTAB tried to remove the key to put the sheave back on but the key was stuck in. Recommend replacing the Motor sheave



PCU HAS TWO SETS OF CARBON FILTERS



FIRST BANK OF CARBON FILTER CLEANLINESS



AHU-3

Unit has a lot of supply leakage coming from the heater section. Access the the OA damper and water valve is not possible do to counter being underneath the access doors



AHU-4 LEAKAGE AT THE DISCHARGE DUCT



AHU4 LEAKAGE IS AT THE CANVAS CONNECTOR SEAM



AHU-4 RETURN DUCT DOES NOT CONNECT SQUARELY TO THE RETURN PLENUM

This installation is reducing free flow area of the duct and could cause lower flow when unit is pulling full return



AHU-4 FILTERS ARE DIRTY



AHU-2 FILTERS ARE EXTREMELY DIRTY



TYPICAL AHU OA AND RETURN DAMPER

If there is a mechanical stopper on the damper it is not accessible due to being butted up against the outside of the unit



AHU-1 OA DAMPER STOPPED BY SELF TAPPING SCREWS



AHU-1 FILTERS



AHU-1



AHU-2



AHU-4



EF-1



EF-2



PCU